



Rotherhithe Street, London, SE16 5EL

SUITABLE FOR A FAMILY, COUPLE, OR SINGLE OCCUPANT.

THIS PROPERTY IT IS VIRTUALLY STAGED

A tidy, two bedroom apartment in Rotherhithe within walking distance of The River Thames as well Rotherhithe Pier offering access to Canary Wharf.

The apartment features a well-kept and naturally bright reception room with a tucked away modern kitchen, two double bedrooms, and a stylish family bathroom. Additional storage can be found in the hallway.

The apartment is located within walking distance of local restaurants, bars, co-op, and the greenery of Stave Hill Ecological Park. The property is also close to local bus routes offering excellent transport into central London.

- Naturally Bright 2 Bedroom Apartment
- Plenty of Storage
- Modern Kitchen
- Furnished
- Excellent Location
- Close to Local Amenities

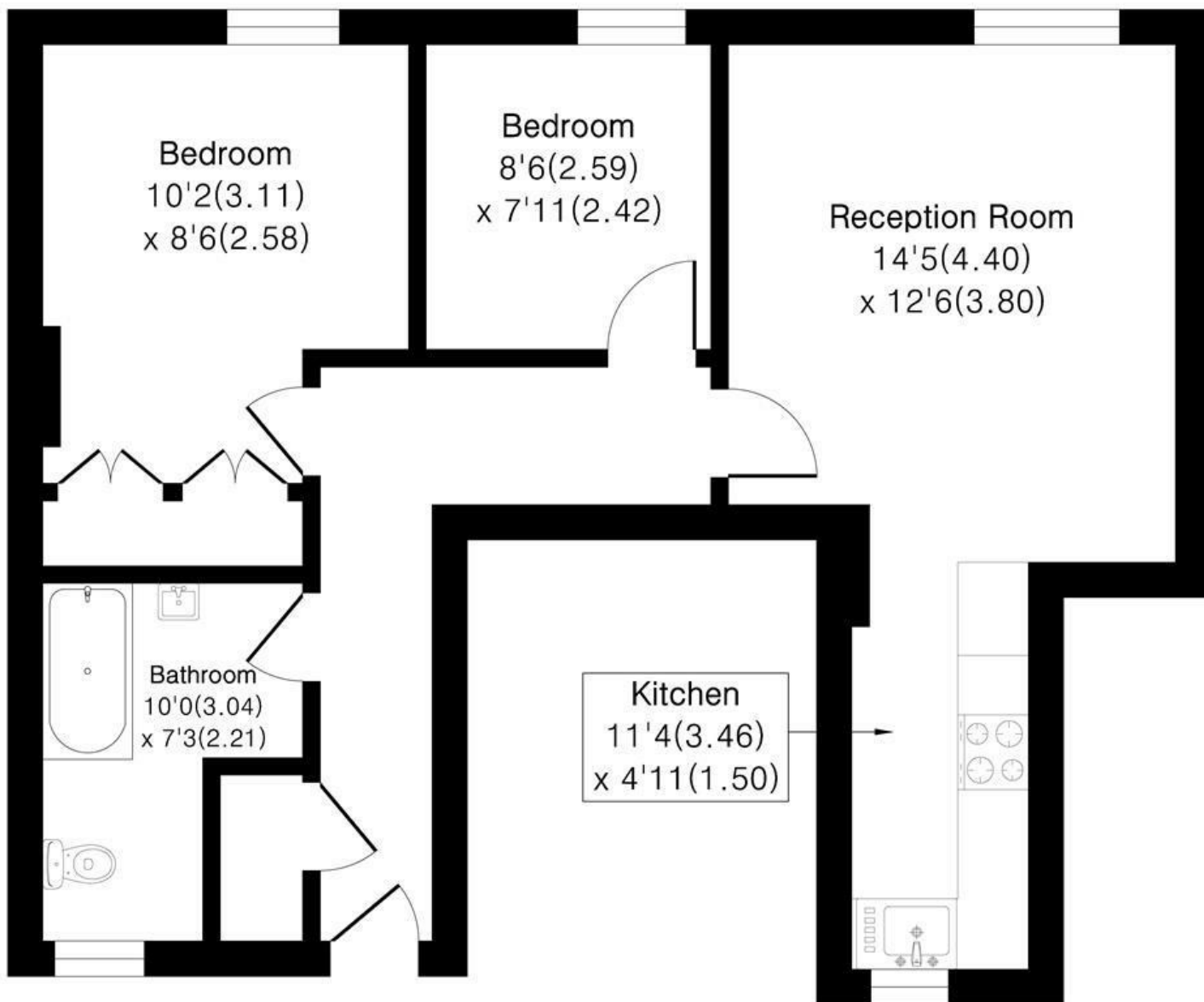
Alex & Matteo
ESTATE AGENTS

£2,000 Per month

The Old Fire Station, Rotherhithe Street, SE16 5EL

Approximate Area = 608 sq ft / 56.4 sq m

For identification only - Not To Scale



First Floor



Floor plan Produced in accordance with RICS Property Measurement 2nd Edition.
Incorporating International Property Measurement Standards (IPMS2 Residential).
Produced for Alex & Matteo Estate Agents.



Energy Efficiency Rating		Current	Potential
Very energy efficient - lower running costs			
(92 plus) A			
(81-91) B			
(69-80) C			
(55-68) D			
(39-54) E			
(21-38) F			
(1-20) G			
Not energy efficient - higher running costs			
England & Wales	EU Directive 2002/91/EC		